

# AVANT™ A<sup>2</sup>D<sup>+</sup> Audiometer



## Dual Channel, Air, Bone, Speech & Masking System

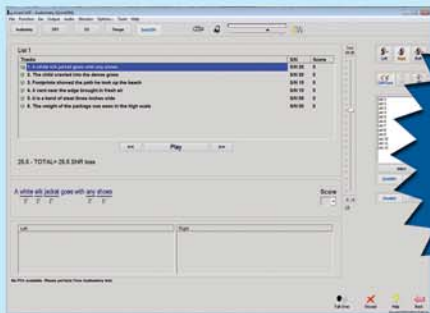


Dual Channel Audiometry

- Integrated Quick SIN™ Testing Capability Available
- Dual Channel
- Air, Bone & Speech Functions
- PC Based Via USB Connection
- Insert Earphones or TDH-39 Headset
- Patient Response Switch
- NOAH™, Sycle.Net & TIMS® Compatible

The AVANT A<sup>2</sup>D<sup>+</sup> Audiometer offers an intuitive user interface for data collection, patient monitoring and counseling. This PC-based audiometer comes standard with insert ear phones, custom carrying case and weighs less than a half pound.

# MedRx®



**Quick SIN™  
Testing  
Capability**



AZDP-S-ADH138-1

[www.medrx-usa.com](http://www.medrx-usa.com) or Call Toll Free: 888-392-1234